

**Regd. Office :**

📍 8C, Khodagunj Road, Kolkata - 700 010  
☎ +91 98300 89922 | 📞 033 2374 0223  
✉ export@sdintlpl.com | 🌐 www.sdintlpl.com

**Factory :**

📍 B/93/H/29/1, Dr. Suresh Chandra Banerjee Road, Kolkata - 700 010  
☎ +91 79805 30262 | 📞 033 2374 0223 | ✉ export@sdintlpl.com



## ABOUT US

1995 being the year of its inception SD INTERNATIONAL PVT. LTD. an ISO certified company, is one of Eastern India's leading manufacturer and exporter of Industrial Leather Gloves and Leather Safety Apparels. With 26 years of expertise and highly skilled workforce we provide a wide range of protective work wear at competitive and affordable pricing with no compromise in quality, along with maintaining the mandatory industrial standards.

### Our mission:

SD INTERNATIONAL is committed to maintain 100% client satisfaction by maintaining certain values.

- ❖ Deep integrity & ensuring code of conduct.
- ❖ Potential leadership with an energetic team.
- ❖ Sufficient infrastructure for immediate expansion.
- ❖ Continuous growth & 100% success.

### Our capacity

- ❖ Production capacity is 2,50,000 to 300,000 units of gloves every month in accordance with the process quality control and inspection team.



**AT SD INTERNATIONAL PVT LTD** we use imported and modern machinery for production which ensures quality finished product as required by our clients alongside maintaining the International Quality standards. The machineries are overhauled from time to time to keep them in proper working conditions and to ensure a smooth production process.

We procure our raw materials from reliable and renowned suppliers with certifications for **CHLOROPHENOLS CONTENT (PCP) TEST, CHROMIUM VI AGING TEST & PH VALUE TEST.**

The work force at **SD INTERNATIONAL PVT LTD** for administration and production are professionally trained and highly skilled.

Our **ISO CERTIFICATION** ensures that all our products and services conform to strict globally recognized quality standards. The finished products that are finally made for export abide strictly to the European CE norms and our few range of gloves are tested and CE CERTIFIED for CAT II levels.

Available factory space 12000 sq. Feet with imported and modern machinery operated

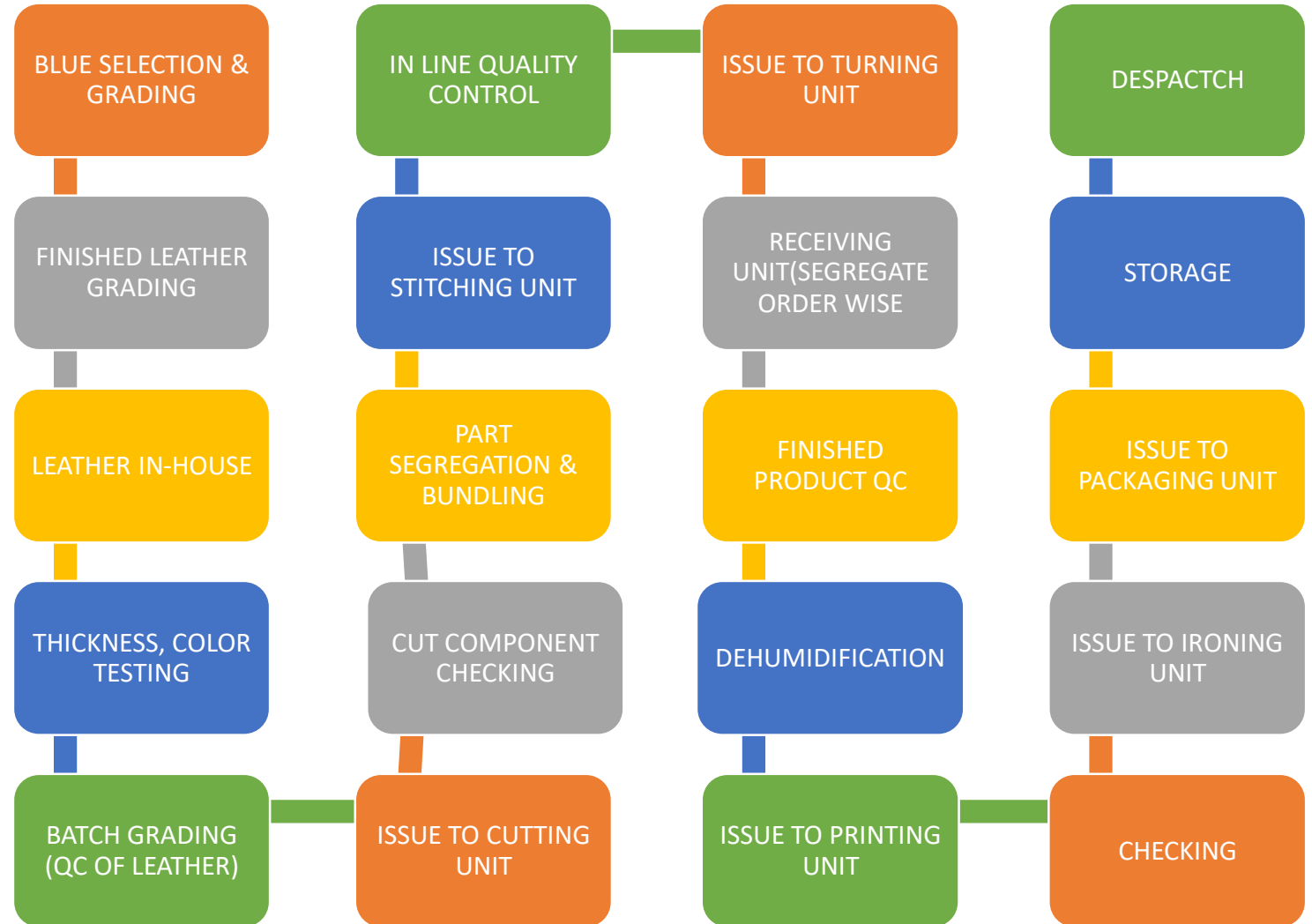
by skilled labours with QMS (quality management system)

- Imported Clicker Machines Brand ATOM-20
- Stitching Machines
- Double Needle Machine
- Zigzag and Binding Machines
- Dehumidifier Machine to control the Mould
- Printing, Turning and Thread Cutting unit.
- Finishing, Ironing and Packing unit.



## QUALITY

QMS – QUALITY MANAGEMENT SYSTEMS AT SD INTERNATIONAL PVT LTD





# PRODUCT RANGE

SDI 101



Natural Cow grain leather, unlined, W/T, adjustable elastic with tape binding. EN 388: 2016

SDI 102



Natural Cow grain & split leather, unlined, W/T adjustable elastic with tape binding. EN 388: 2016

SDI 103



Natural Cow split leather, unlined, W/T, adjustable elastic with tape binding. SIZE (6-11)

SDI 104



Natural Cow grain leather on palm & Red knitted fabric at the back, unlined, W/T, elastic cuff with Velcro adjuster. SIZE (6-11)

SDI 105



Natural Cow grain leather, unlined, K/T, adjustable elastic with leather piping hem. EN 388: 2016

SDI 106



Yellow Cow grain leather, unlined, W/T, adjustable elastic with tape binding. EN 388: 2016



 SD International Private Limited

# DRIVER GLOVES

SDI 107



Natural Cow grain leather, cotton Fleece lining, W/T, adjustable elastic with tape binding.  
 SIZE (7-11)

SDI 108

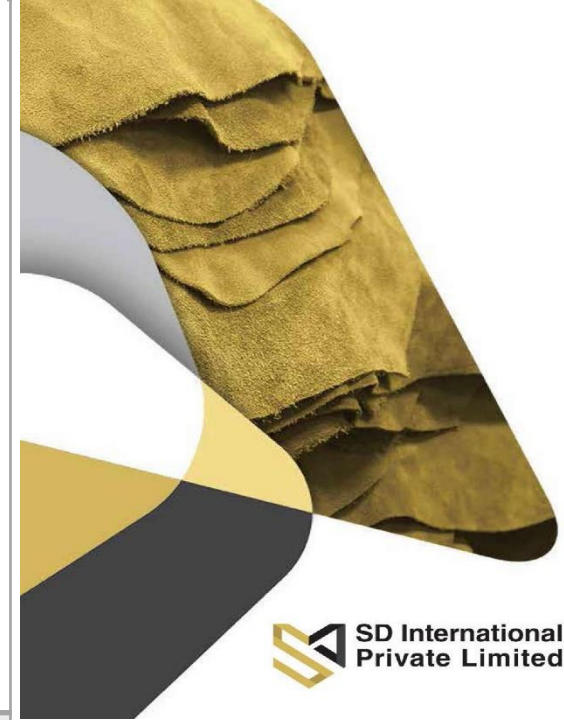


Natural Cow grain, unlined, W/T, adjustable elastic with tape binding.  
 SIZE (7-11)

SDI 109



Brown Cow grain Water Repellant leather, unlined, W/T, Kevlar stitched, adjustable elastic with tape binding.  
 SIZE (7-12)



 SD International Private Limited

SDI 110



Brown Cow Split leather, unlined, K/T, adjustable elastic with tape binding.  
 SIZE (S-2XL)

SDI 111



Yellow Cow Split leather, unlined, K/T, adjustable elastic with tape binding.  
 SIZE (S-2XL)

SDI 112



Natural Cow grain leather, unlined, K/T, adjustable elastic with tape binding.  
 SIZE (S-2XL)

## DRIVER GLOVES

**SDI 113**



Green Beige Cow grain leather, K/T, adjustable elastic with tape binding.  
SIZE (S-2XL)

**SDI 114**



Natural Cow grain, unlined, S/T, adjustable elastic with tape binding.  
SIZE (S-2XL)

**SDI 115**



Green Beige Cow grain leather, S/T, adjustable elastic with tape binding.  
SIZE (S-2XL)

**SDI 116**



Natural Cow grain leather, Hi-vis fabric at finger tips, unlined, K/T, adjustable elastic with tape binding.  
SIZE (S-2XL)

**SDI 118**



Green Beige Cow grain leather, Hi-vis fabric at finger tips, unlined, K/T, adjustable elastic with tape binding.  
SIZE (S-2XL)

**SDI 117**



Brown Cow grain leather, unlined, K/T, Kevlar stitched, adjustable elastic with tape binding.  
SIZE (S-2XL)



**SD International Private Limited**

# DRIVER GLOVES



SDI 119



Brown Cow grain **Water Repellent leather**, S/T, adjustable elastic with tape binding. SIZE (S-2XL)

SDI 120



Yellow Cow grain, split reinforcement on palm, unlined, K/T, Kevlar thread stitched, adjustable elastic with leather piping hem. SIZE (S-2XL)

SDI 121



Yellow Cow grain leather, S/T, adjustable elastic with tape binding. SIZE (S-2XL)

SDI 122



Natural Cow grain leather, brown knitted fabric at the back, unlined, W/T, adjustable elastic with folded hem. SIZE (6-11)

SDI 123



Natural Cow grain leather, brown knitted fabric at the back, unlined, W/T, ribbed cuff. SIZE (6-11)

SDI 124



Natural Cow split leather, red/blue drill fabric at the back, unlined, S/T, ribbed cuff. SIZE (7-11)



 SD International Private Limited

## DRIVER GLOVES

SDI 201



SDI 202



SDI 203



SDI 204



SDI 205



SDI 206



# CANADIAN GLOVES

Cow Split leather, D/P, cotton back, cotton lining, W/T, rubberized cuff, adjustable elastic with tape binding. SIZE (8-12)

Cow Split leather, D/P, cotton back, cotton lining, W/T, rubberized cuff, adjustable elastic with tape binding. SIZE (8-12)



Cow Grain leather, D/P, cotton back, cotton lining, W/T, rubberized cuff, adjustable elastic with tape binding. SIZE (8-12)

SDI 207



Cow Grain leather, cotton back, cotton lining, W/T, rubberized cuff, adjustable elastic with tape binding.  
SIZE (8-12)

SDI 208



Cow Split leather, cotton back, cotton lining, W/T, rubberized cuff, adjustable elastic with tape binding.  
SIZE (8-12)

SDI 209



Cow Split leather, denim back, cotton lining, W/T, canvas cuff with folded hem, adjustable elastic.  
SIZE (8-12)



SDI 210



Cow Split leather, D/P, denim back & cuff with folded hem, cotton lining, W/T, adjustable elastic with tape binding.  
SIZE (8-12)

SDI 211



Cow Split leather, cotton back, cotton lining, W/T, canvas cuff, Kevlar stitched, adjustable elastic with tape binding.  
SIZE (8-12)

SDI 212



Cow split leather, cotton back, cotton lining, W/T, rubberized cuff, adjustable elastic with tape binding.  
SIZE (8-12)

# CANADIAN GLOVES



**SDI 213**



Cow Split leather, D/P, cotton back, cotton lining, W/T, canvas cuff, Kevlar stitched, adjustable elastic with tape binding.  
 SIZE (8-12)

**SDI 214**



Cow Grain leather, cotton back, cotton lining, W/T, rubberized cuff, adjustable elastic with tape binding.  
 SIZE (8-12)

**SDI 215**



Cow grain leather, cotton back, cotton lining, W/T, 10cm Ribbed cuff, adjustable elastic.  
 SIZE (8-12)

**SDI 216**



Cow Split leather, cotton back & cotton lining, W/T, rubberized cuff, adjustable elastic with tape binding.  
 SIZE (8-12)

**SDI 217**



Cow Split leather, Hi-Vis back & cuff, fleece lining, W/T, R/T on back & cuff, adjustable elastic with tape binding.  
 SIZE (8-12)

**SDI 218**



Cow grain leather, cotton back, cotton lining, W/T, Canvas cuff, adjustable elastic with tape binding.  
 SIZE (8-12)



# CANADIAN GLOVES

**SDI 301**



Cow Split leather, unlined, W/T, 8cm cuff with crushed split leather, total 28cm.  
SIZE (8-12)

**SDI 302**



Cow Split & grain leather (combi), unlined, W/T, 8cm cuff with crushed split leather, total 28cm.  
SIZE (8-12)

**SDI 303**



Cow grain leather, unlined, W/T, 15 cm cuff with crushed split leather, total 35 cm.  
SIZE (8-12)

**SDI 304**



Cow grain leather, unlined, W/T, 8cm cuff with crushed split leather, total 28cm.  
SIZE (8-11)

**SDI 305**



Cow Split leather, unlined, W/T, 15 cm cuff with crushed split leather, total 35 cm.  
SIZE (8-11)

**SDI 306**



Cow grain leather, unlined, W/T, 7 cm Canvas cuff, total 30 cm.  
SIZE (8-11)



 SD International Private Limited

## WELDING GLOVES

SDI 307  
ANTI CUT LEVEL 5



High Resistance cow split leather, High Tenacity fiber seamless knitted gloves lined, S/T, 15 cm cuff, total 35 cm.  
SIZE (10-12)

SDI 308



Cow Grain leather, unlined, W/T, 15 cm cuff with synthetic leather, total 35 cm.  
SIZE (10-12)

SDI 309



Cow split leather, cotton drill fabric for cuff lining, cotton brushed fabric lining for palm back & fingers, W/T, total 35 cm.  
SIZE (10/L)

SDI 310



Cow split leather, cotton drill fabric lining for cuff, cotton brushed fabric lining for palm back & fingers, W/T, welted finger tips, total 35 cm.  
SIZE (10/L)

SDI 311

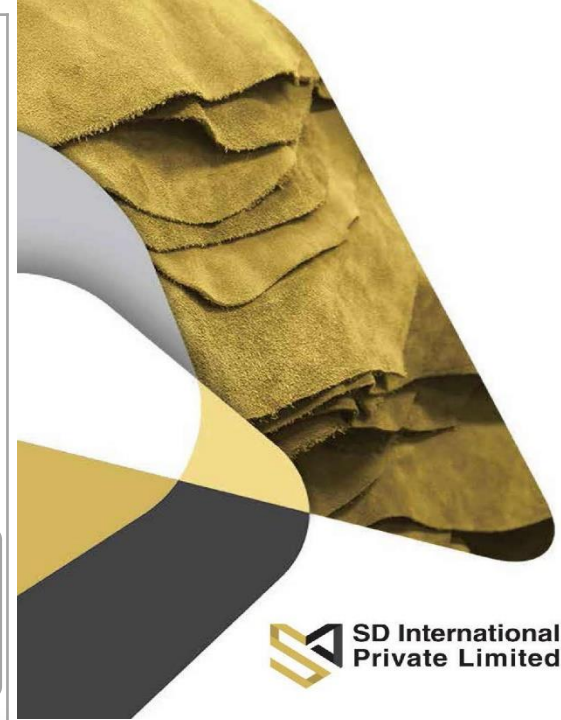


Cow split leather, D/P, cotton drill fabric lining for cuff, cotton brushed fabric lining for palm back & fingers, W/T, welted finger tips, Kevlar stitched, total 35 cm.  
SIZE (10/L)

SDI 312



Cow split leather, cotton drill fabric lining for cuff, cotton brushed fabric lining for palm back & fingers, W/T, welted finger tips, total 35 cm.  
SIZE (10/L)



 SD International Private Limited

## WELDING GLOVES

SDI 313



Cow split leather, cotton drill fabric for cuff lining, cotton brushed fabric lining for palm back & fingers, Kevlar stitched, W/T, welted finger tips, total 35 cm.

SIZE (10/L)

SDI 314



Cow split leather, D/P, cotton drill fabric lining for cuff, cotton brushed fabric lining for palm back & fingers, WT, welted finger tips, Kevlar stitched, total 35 cm.

SIZE (10/L)

SDI 315



Cow split leather, cotton drill fabric for cuff lining, cotton brushed fabric lining for palm back & fingers, W/T, welted finger tips, total 35 cm.

SIZE (10/L)



 SD International Private Limited

## WELDING GLOVES

SDI 316



Cow split leather, cotton drill fabric lining for cuff, cotton brushed fabric lining for palm back & fingers, WT, welted finger tips, total 35 cm.

SIZE (10/L)

SDI 317



Cow split leather, D/P, cotton drill fabric lining for cuff, cotton brushed fabric lining for palm back & fingers, WT, welted finger tips, total 35 cm.

SIZE (10/L)

**SDI 401**



Seamless knitted gloves, 10gsm, 40 grms, Beige color with red hem.  
SIZE (10 )

**SDI 402**



Seamless knitted gloves, High Tenacity fiber ,10gsm, 40 grms, grey/black color with black hem.  
SIZE (10 )

**SDI 403**



Seamless knitted gloves, 7 gsm, 50 grms, Beige color with yellow hem.  
SIZE (10 )

**SDI 404**



Seamless knitted gloves, 7 gsm, 40 grms, Black color with yellow hem.  
SIZE (10 )



## SEAMLESS KNITTED GLOVES



**SDI 501**  
**APRON**



SD INTERNATIONAL

Cow Split leather, Adjustable leather belt with buckle adjuster, Natural & Yellow colour

SIZE (60 x 90cm and 80 x 100cm)

**SDI 502**  
**TROUSER**



SD INTERNATIONAL

Cow Split leather, Metallic button, Natural colour.

SIZE (M, L & XL)

**SDI 503**  
**LEG GUARD**



SD INTERNATIONAL

Cow Split leather, Adjustable Velcro and belt, Natural colour.

SIZE (STANDARD)

**SDI 504**  
**ARM GUARD**



SD INTERNATIONAL

Cow Split leather, Adjustable cord, Natural colour.

SIZE (STANDARD)

**SDI 505**  
**JACKET**



SD INTERNATIONAL

Cow Split leather, Metallic button, Natural colour.

SIZE (M, L & XL)



# WELDING GARMENTS



**“DISCIPLINE, PUNCTUALITY AND 100% TO EVERYTHING”**

**- SANATAN DHARA  
FOUNDER & DIRECTOR OF SD INTERNATIONAL PVT. LTD.**



**SD International  
Private Limited**